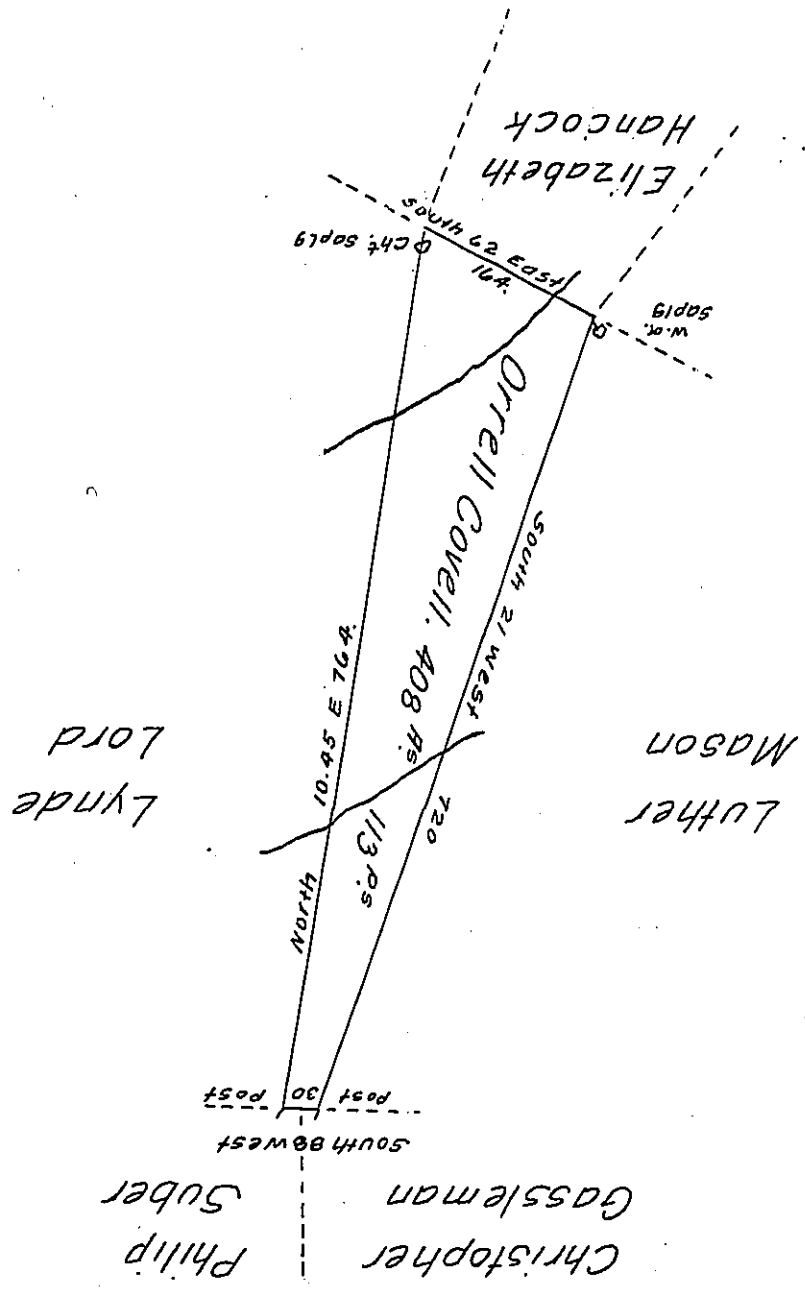


FORM No. 1.



Draught of a Tract of Land called Shetland, situate in Luzerne County adjoining Land surveyed for Luther Mason and containing Four hundred and Eight Acres and One hundred and Thirteen Perches and the usual Allowance of Six Per Centum for Roads. Surveyed the 18th Day of August 1804 for Orrell Coveil in Pursuance of a Warrant bearing Date the 12th Day of February 1793.

Tho^s Sambourne Dy. S^r

*To Samuel Cochran Esquire
Surveyor General*

IN TESTIMONY that the above is a copy of the original remaining on file in the Department of Internal Affairs of Pennsylvania, made conformably to an Act of Assembly approved the 16th day of February 1833, I have hereunto set my hand and caused the Seal of said Department to be affixed at Harrisburg, this twenty fifth day of November 1907.

Henry Howard
Secretary of Internal Affairs.